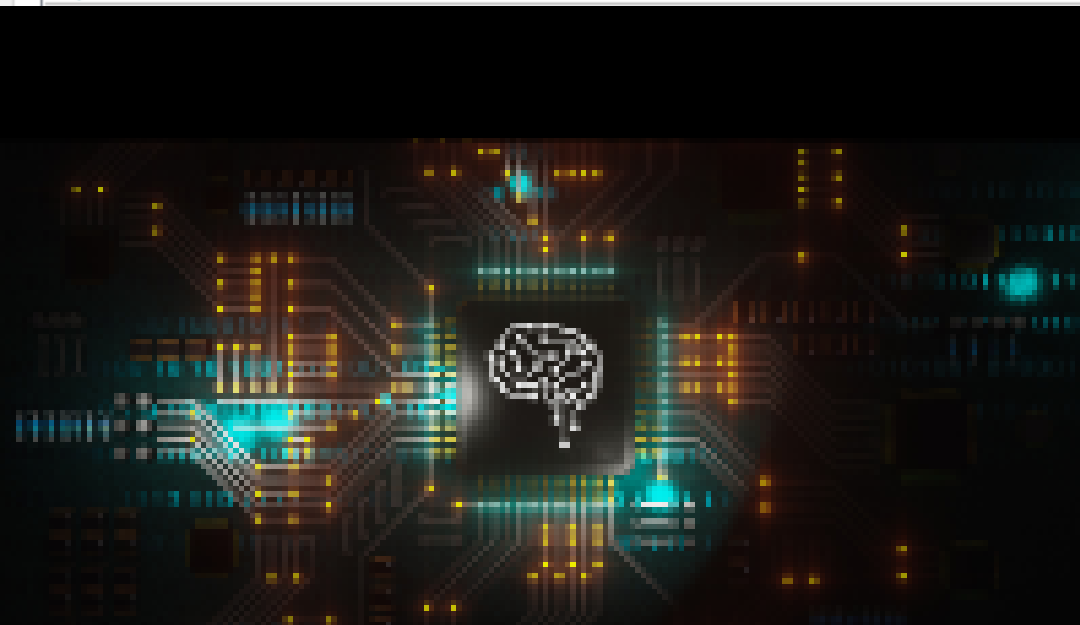


About	Common	Inputs	Dependencies
Variable			
ab Order properties:			
123	Buy Magic Number		
123	Sell Magic Number		
✓	New order buy		
✓	New order sell		
123	Maximum Trades set 1 if need FIFO		
1/2	Interval points		
1/2	Pipsstep		
123	Profit take[PIPS]		
1/2	Total profit[\$]		
1/2	Stop loss [\$]		
1/2	order I		
1/2	order II		
1/2	Max Lot		
123	MA Period		
123	Volatility Pair		
1/2	RSI indicator		
1/2	MACD indicator		
1/2	ADX indicator		



# MIX PRINCESS

EXPERT ADVISOR

## CONFIG ONLY

1.INTERVAL POINTS

2.PIPS STEP

3.PROFITS TAKE

4.Total Profits

5.Stoploss

6.Order 1

7.Order 2

8.Max lot

9.MA

10. Volatility Pair

About	Common	Inputs	Dependencies
Variable			
Order properties:			
123	Buy Magic Number		
123	Sell Magic Number		
✓	New order buy		
✓	New order sell		
123	Maximum Trades set 1 if need FIFO		
1/2	Interval points		
1/2	Pipsstep		
123	Profit take[PIPS]		
1/2	Total profit[\$]		
1/2	Stop loss [\$]		
1/2	order I		
1/2	order II		
1/2	Max Lot		
123	MA Period		
123	Volatility Pair		
1/2	RSI indicator		
1/2	MACD indicator		
1/2	ADX indicator		



# MIX PRINCESS

EXPERT ADVISOR

## CONFIG ONLY

1.INTERVAL POINTS

2.PIPS STEP

3.PROFITS TAKE

4.Total Profits

5.Stoploss

6.Order 1

7.Order 2

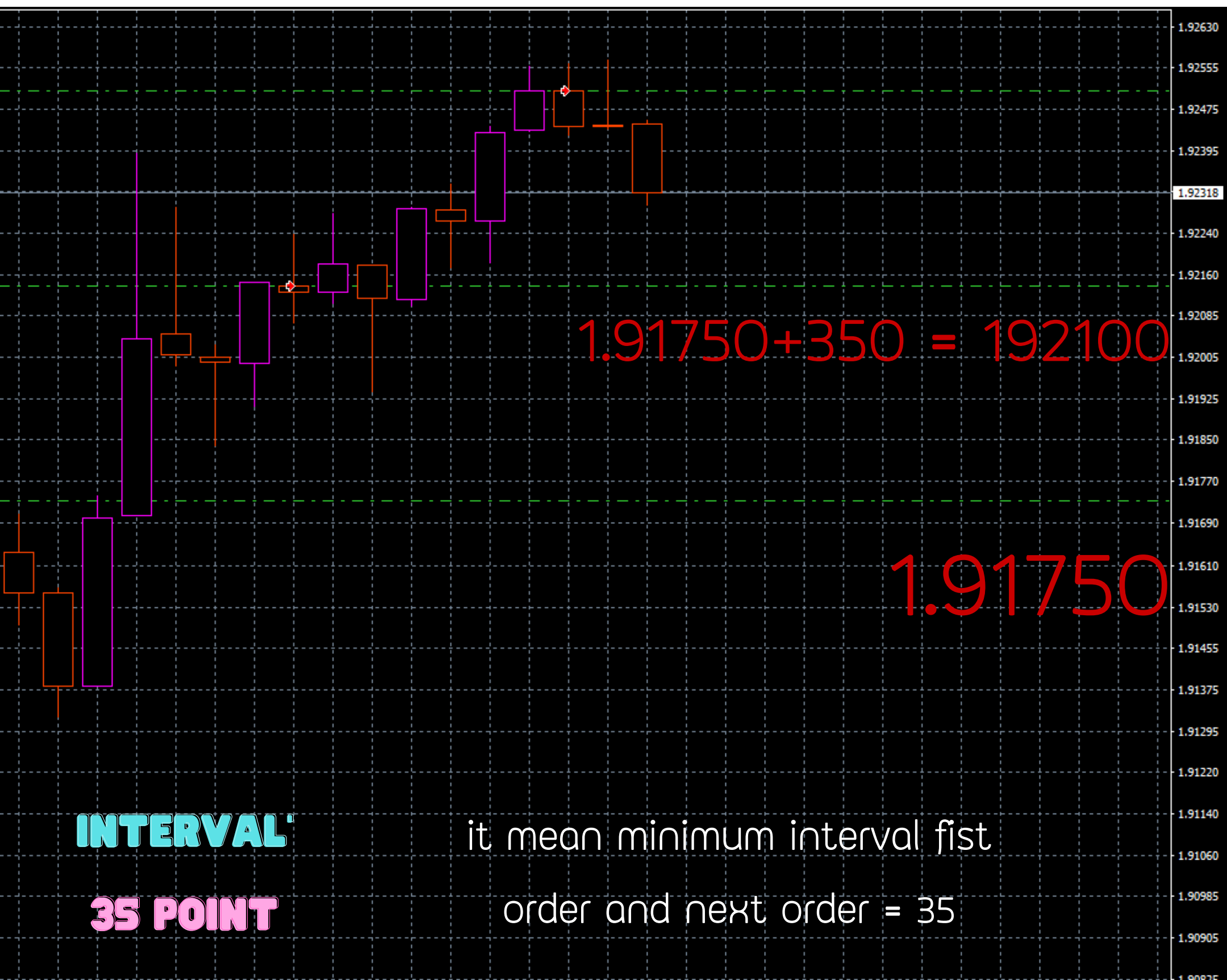
8.Max lot

9.MA

10. Volatility Pair

# CONFIG ONLY

## 1.INTERVAL POINTS



# CONFIG ONLY

## 1.INTERVAL POINTS



**CONFIG ONLY**

**2.PIPS STEP**

**INTERVAL X PIPSTEP = TRADE**

35 x 1 = trade Every 350 points

35 x 2 = trade Every 700 points



**35 X 2 = TRADE**  
**EVERY 700 POINTS**





**35 X 1 = TRADE**  
**EVERY 350POINTS**





**CONFIG ONLY**

4.Total Profits THIS  
CONFIG USE FOR Total  
profits calculate in  
martingale step

3

hard close but high profits

2

EASY CLOSE AND FIX WORNG TRADE BUT LOW PROFITS

# **CONFIG ONLY**

## 5.Stoploss

How Much you can lose in total usd

**1. Order 1 = what you need Start with ? lot**

**2. Order 2 how much you " + " with first order in this Step flexible can config**

**3. Max lot after 2 order wait calculator order lot from order 2 with martingale formula method**

# 9.MA

## 10. Volatility Pair

With strategy will config with 2 data config. with mix strategy you need find . best setting for you pair . but for Defult setting it can be use with main pair



Mix Princess

I NEED YOU MIX AND  
CUSTOM WITH YOU OWN

Also

My Live Signal use Default